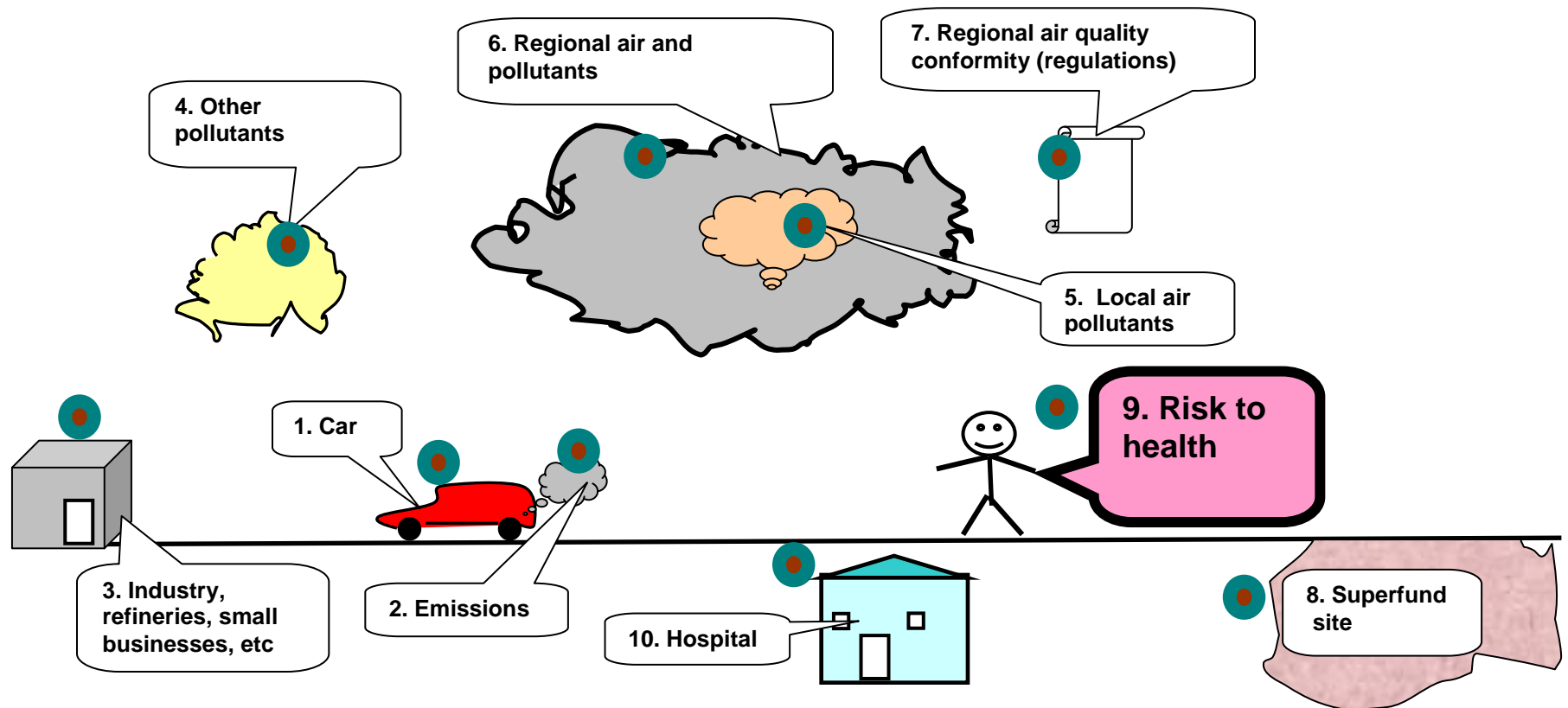


VEHICLE EMISSIONS AND RISK TO HEALTH: CONNECTING THE DOTS



For each transportation alternate, to compare the relative risks to health, CONNECT THE DOTS.

1. Connect Dot 1 to Dot 2.
2. Connect Dot 1 to Dot 4.
3. Connect Dot 2 to Dot 4.
4. Connect Dot 3 to Dot 4.
5. Connect Dot 4 to Dot 5.
6. Connect Dot 5 to Dot 6
7. Connect Dot 6 to Dot 7
8. If you **do not** wish to consider human health for transportation alternatives, **stop here**
9. If you **do** wish to consider human health for transportation alternatives,
 - Connect Dot 5 to Dot 9 And Connect Dot 8 to Dot 9
 - . That will give some very good information on minimizing the Dot 9 to Dot 10 connection (Avoidance and mitigation measures can be identified for each transportation alternative.)